

## 平面印刷品基本技术要求

科沃斯机器人股份有限公司

物料名称	T20 OMNI 美国说明书	尺 寸	145*210mm	
型 号	ZJ2230	印刷颜色	单色 K 印刷 +Pantone 279C	
物料编码	451-2230-2500	装订方式	骑马钉	
版 次	A00	页 数	68p	
材 质	封面 157 哑粉纸 + 内页 105g 哑粉纸	比 例	1:1	
变更记录:				
		设计	审核	批准
				



# DEEBOT **120** OMNI

## Instruction Manual

## Important Safety Instructions

### IMPORTANT SAFETY INSTRUCTIONS READ ALL INSTRUCTIONS BEFORE USING THIS APPLIANCE.

When using an electrical appliance, basic precautions should always be followed, including the following:

**WARNING:** Read all safety warnings and instructions. Failure to follow the warnings and instructions may result in electric shock, fire or serious injury.

1. Do not allow to be used as a toy. Close attention is necessary when used by or near children.
2. Clear the area to be cleaned. Remove power cords and small objects from the floor that could entangle the Appliance. Tuck rug fringe under the rug base, and lift items such as curtains and tablecloths off the floor.
3. If there is a drop off in the cleaning area due to a step or stairs, you should operate the Appliance to ensure that it can detect the step without falling over the edge. It may become necessary to place a physical barrier

at the edge to keep the unit from falling. Make sure the physical barrier is not a trip hazard.

4. Only use as described in this manual. Only use attachments recommended or sold by the manufacturer.
5. Do not handle plug or appliance with wet hands.
6. Non-rechargeable batteries are prohibited.
7. Do not use without dust bin and/or filters in place.
8. Do not operate the vacuum in an area where there are lit candles or fragile objects on the floor to be cleaned.
9. Do not use and store in extremely hot or cold environments (below  $-5^{\circ}\text{C}$  / $23^{\circ}\text{F}$  or above  $40^{\circ}\text{C}$  / $104^{\circ}\text{F}$ ). Please charge the robot in temperature above  $0^{\circ}\text{C}$  / $32^{\circ}\text{F}$  and below  $40^{\circ}\text{C}$  / $104^{\circ}\text{F}$ .
10. Keep hair, loose clothing, fingers, and all parts of body away from any openings and moving parts.
11. Do not operate the Appliance in a room where an infant or child is sleeping.
12. For INDOOR use ONLY. Do not use the Appliance in outdoor, commercial or industrial

- environments. Do not use Appliance on wet surfaces or surfaces with standing water.
13. Do not allow the Appliance to pick up large objects like stones, large pieces of paper or any item that may clog the Appliance.
  14. Do not use to pick up flammable or combustible materials such as gasoline, printer or copier toner, or use in areas where they may be present.
  15. Do not pick up anything that is burning or smoking, such as cigarettes, matches, hot ashes, or anything that could cause a fire.
  16. Do not put any object into openings. Do not use with any opening blocked; keep free of dust, lint, hair, and anything that may reduce air flow.
  17. Take care not to damage the power cord. Do not pull on or carry the Appliance or Docking Station by the power cord, use the power cord as a handle, close a door on the power cord, or pull power cord around sharp edges or corners. Do not run Appliance and Docking station over the power cord. Keep power cord away from hot surfaces. Do not unplug by pulling on cord. To unplug, grasp the plug, not the cord.
  18. If the power cord is damaged, it must be replaced by the manufacturer or its service agent in order to avoid a hazard.
  19. Do not use with a damaged power cord or plug. Do not use the Appliance or Docking Station if it is not working properly, has been dropped, damaged, left outdoors, or come in contact with water. It must be repaired by the manufacturer or its service agent in order to avoid a hazard.
  20. Turn OFF the power switch before cleaning or maintaining the Appliance. Turn off all controls before unplugging. Always turn off this appliance before connecting or disconnecting motorized nozzle.
  21. Remove the Appliance from the Docking Station, and turn OFF the power switch to the Appliance before removing the battery for disposal of the Appliance.
  22. The battery must be removed and discarded according to local laws and regulations before disposal of the Appliance.
  23. Please dispose of used batteries according to local laws and regulations.

24. Do not incinerate the Appliance even if it is severely damaged. The batteries can explode in a fire.
25. When not using the Docking Station, unplug from outlet when not in use and before servicing.
26. The Appliance must be used in accordance with the directions in this Instruction Manual. ECOVACS ROBOTICS cannot be held liable or responsible for any damages or injuries caused by improper use.
27. Prevent unintentional starting. Ensure the switch is in the off position before connecting to battery pack, picking up or carrying the appliance.
28. When battery pack is not in use, keep it away from other metal objects, like paper clips, coins, keys, nails, screws or other small metal objects, that can make a connection from one terminal to another. Shorting the battery terminals together may cause burns or a fire.
29. Under abusive conditions, liquid may be ejected from the battery; avoid contact. If contact accidentally occurs, flush with water. If liquid contacts eyes, additionally seek medical help. Liquid ejected from the battery may cause irritation or burns.
30. Do not use a battery pack or appliance that is damaged or modified. Damaged or modified batteries may exhibit unpredictable behavior resulting in fire, explosion or risk of injury.
31. Do not expose a battery pack or appliance to fire or excessive temperature. Exposure to fire or temperature above 130°C may cause explosion. The temperature of 130°C can be replaced by the temperature of 265°F.
32. Follow all charging instructions and do not charge the battery pack or appliance outside of the temperature range specified in the instructions. Charging improperly or at temperatures outside of the specified range may damage the battery and increase the risk of fire.
33. Have servicing performed by a qualified repair person using only identical replacement parts. This will ensure that the safety of the product is maintained.
34. Do not modify or attempt to repair the appliance or the battery pack (as applicable) except as indicated in the instructions for use

and care.

35. Place the cords from other appliances out of the area to be cleaned.
36. Do not operate the vacuum in a room that has lit candles on furniture that the vacuum may accidentally hit or bump into.
37. Do not allow children to sit on the vacuum.
38. Use only as described in this manual. Use only manufacturer's recommended attachments.
39. Recharge only with the charger specified by the manufacturer. A charger that is suitable for one type of battery pack may create a risk of fire when used with another battery pack.
40. Use appliances only with specifically designated battery packs. Use of any other battery packs may create a risk of injury and fire.
41. The robot contains batteries that are only replaceable by skilled persons. To replace the robot's battery, please contact Customer Service.
42. If the robot will not be used for a long time, fully charge the robot and power OFF for storage and unplug the Docking Station.
43. To Reduce The Risk Of Electric Shock – Do not use on wet surfaces. Do not expose to rain. Store indoors.
44. To Reduce The Risk Of Injury From Moving Parts – Unplug Before Servicing.
45. Risk Of Injury. Brush May Start Unexpectedly. Unplug Before Cleaning or Servicing.
46. To reduce the risk of injury, user must read instruction manual.
47. To Reduce The Risk Of Electric Shock – Do not use outdoors or on wet surfaces.
48. Please make sure your power supply voltage matches the power voltage marked on the Docking Station.
49. Do not use the Docking Station if it is damaged.
50. The plug must be removed from the receptacle before cleaning or maintaining the Docking Station.
51. Connect to a properly grounded outlet only. See GroundingInstructions.GROUNDING INSTRUCTIONSThis appliance must be grounded. If it should malfunction or breakdown, grounding provides a path of least resistance for electric current to

reduce the risk of electric shock. This appliance is equipped with a cord having an equipment-grounding conductor and grounding plug. The plug must be inserted into an appropriate outlet that is properly installed and grounded in accordance with all local codes and ordinances. **WARNING** – Improper connection of the equipment-grounding conductor can result in a risk of electric shock. Check with a qualified electrician or service person if you are in doubt as to whether the outlet is properly grounded. Do not modify the plug provided with the appliance – if it will not fit the outlet, have a proper outlet installed by a qualified electrician. This appliance is for use on a nominal 120-V circuit and has a grounding attachment plug that looks like the plug illustrated as the following photo. Make sure that the appliance is connected to an outlet having the same configuration as the plug. No adaptor should be used with this appliance.

≡	Direct current
~	Alternating current

This Device Complies with DHHS Radiation Rules, 21CFR Chapter 1, Subchapter J.

### Federal Communications Commission (FCC) Interference Statement

**NOTE:** This equipment has been tested and found to comply with the limits for a Class B digital device, pursuant to Part 15 of the FCC Rules.

These limits are designed to provide reasonable protection against harmful interference in a residential installation. This equipment generates, uses and can radiate radio frequency energy and, if not installed and used in accordance with the instructions, may cause harmful interference to radio communications.

However, there is no guarantee that interference will not occur in a particular installation. If this equipment does cause harmful interference to radio or television reception, which can be determined by turning the equipment off and on, the user is encouraged to try to correct the

interference by one or more of the following measures:

- Reorient or relocate the receiving antenna.
- Increase the separation between the equipment and receiver.
- Connect the equipment into an outlet on a circuit different from that to which the receiver is connected.
- Consult the dealer or an experienced radio/TV technician for help.

This device complies with Part 15 of the FCC Rules. Operation is subject to the following two conditions:

(1) This device may not cause harmful interference, and (2) this device must accept any interference received, including interference that may cause undesired operation.

**Caution:** Changes or modifications to this unit not expressly approved by the party responsible for compliance could void the user's authority to operate the equipment.

This device contains licence-exempt transmitter(s)/ receiver(s) that comply with Innovation, Science

and Economic Development Canada's licence-exempt RSS(s). Operation is subject to the following two conditions:

- (1) This device may not cause interference.
- (2) This device must accept any interference, including interference that may cause undesired operation of the device.

### **RF exposure warning**

This equipment complies with FCC radiation exposure limits set forth for an uncontrolled environment.

This equipment must be installed and operated in accordance with provided instructions and the antenna(s) used for this transmitter must be installed to provide a separation distance of at least 20 cm from all persons and must not be collocated or operating in conjunction with any other antenna or transmitter.

MPE caution (for mobile device under Part 15.247)


To satisfy FCC&ICRF exposure requirements, a separation distance of 20cm or more should be maintained between the antenna of this device



and persons during device operation.

To ensure compliance, operations at closer than this distance is not recommended.

To disable Wi-Fi module on DEEBOT, power the robot ON. Place the robot on the OMNI Station making sure the Charging Contacts on DEEBOT and the Station Pins make a connection.

Press and hold the  Button on the Station for 30 seconds. And press and hold the AUTO Mode Button on the robot for 30 seconds.

To enable Wi-Fi module on DEEBOT, power the robot OFF and then power ON. And unplug the Station and plug it again.

### **SAVE THESE INSTRUCTIONS**

For INDOOR household use ONLY.

This device contains licence-exempt transmitter(s)/ receiver(s) that comply with Innovation, Science and Economic Development Canada's licence-exempt RSS(s). Operation is subject to the following two conditions:

- (1) This device may not cause interference.
- (2) This device must accept any interference, including interference that may cause undesired

operation of the device.

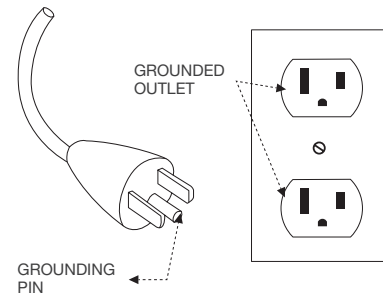
To satisfy FCC&ICRF exposure requirements, a separation distance of 20cm or more should be maintained between the antenna of this device and persons during device operation.

To ensure compliance, operations at closer than this distance is not recommended.

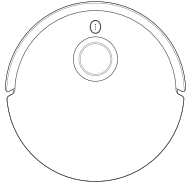
### **Device Update**

Typically, some devices are updated bi-monthly, but not always so specific.

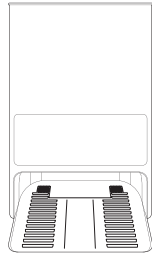
Some devices, especially those that went on sale more than three years ago, will only be updated if a critical vulnerability is found and fixed.



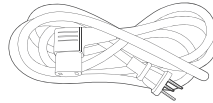
# Package Contents



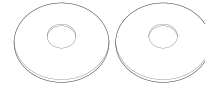
Robot



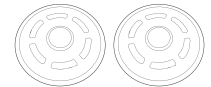
OMNI Station



Power Cord



Washable Mopping Pads



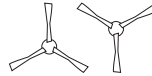
Mopping Pad Plates



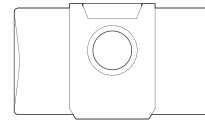
Instruction Manual



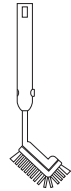
Multi-Function Cleaning Tool



Dual Side Brushes



Dust Bag

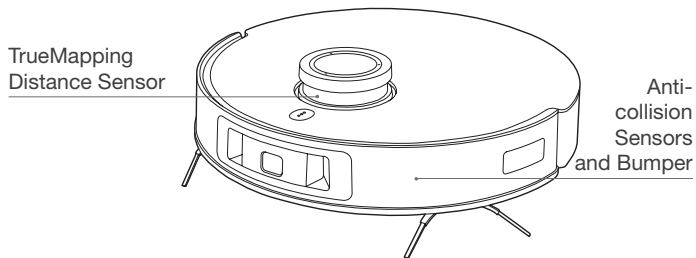
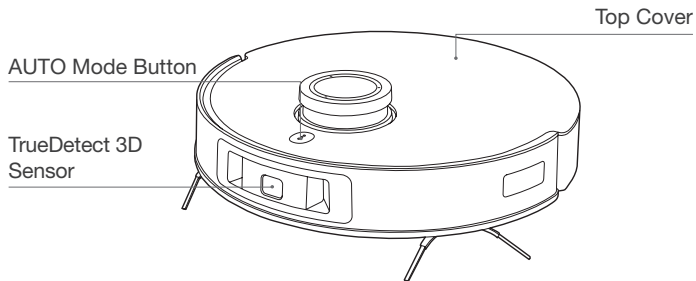


Cleaning Brush

**Note:** Figures and illustrations are for reference only and may differ from actual product appearance. Product design and specifications are subject to changes without notice.

# Product Diagram

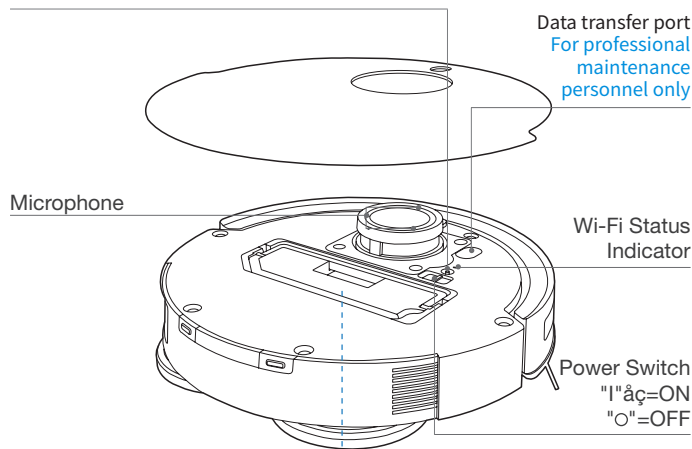
## Robot



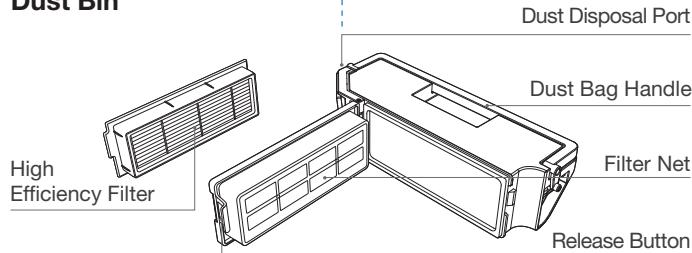
## RESET Button

**Configuring the network:** During the connection, press the RESET Button, and there will be voice prompts to guide you through the connection.

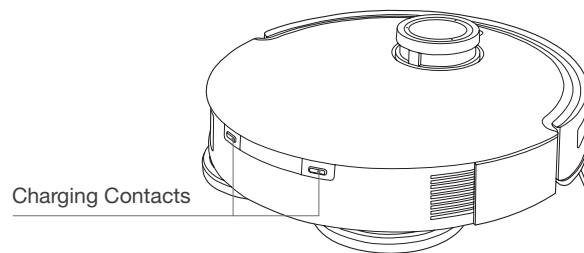
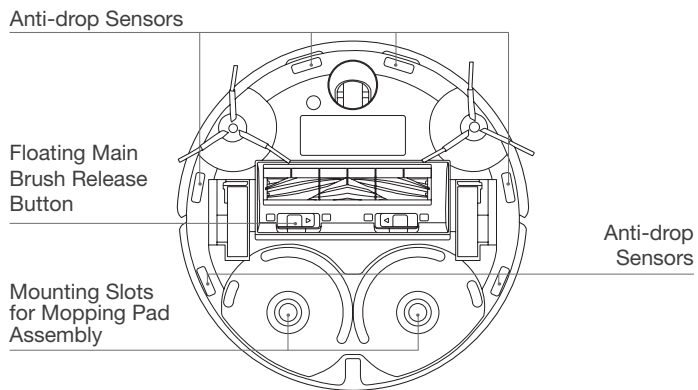
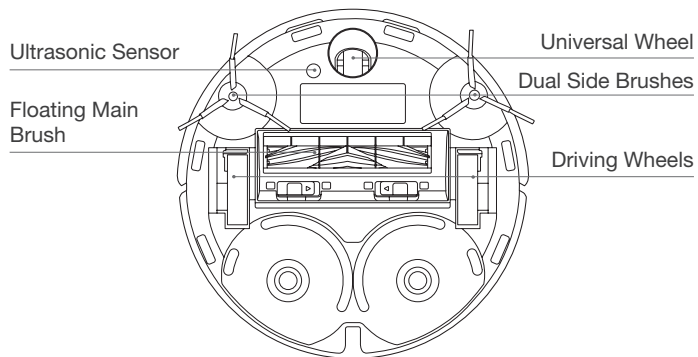
**Restore to default settings:** Press and hold RESET button for 5 seconds. After you hear the voice prompt, the startup music will be played and the robot will be restored to default settings. Please use with caution.



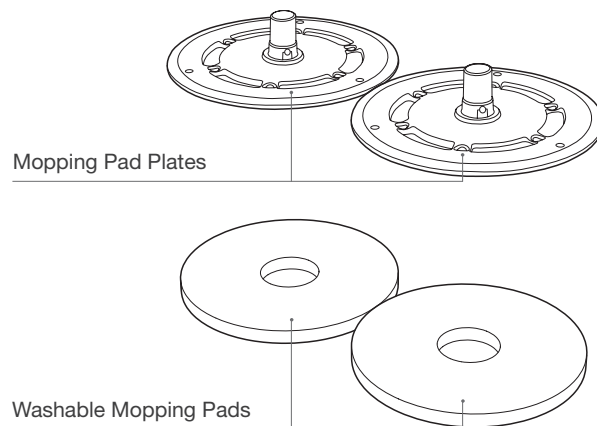
## Dust Bin



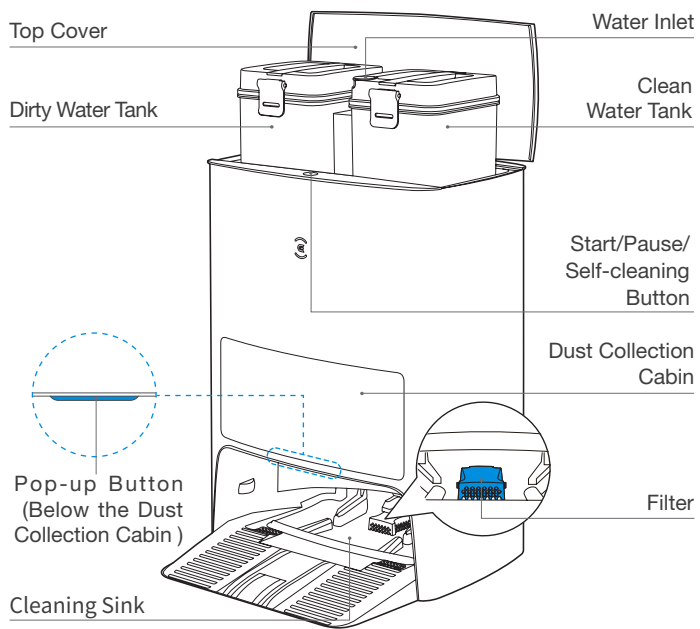
## Bottom View



## Mopping Pad Assembly



## OMNI Station



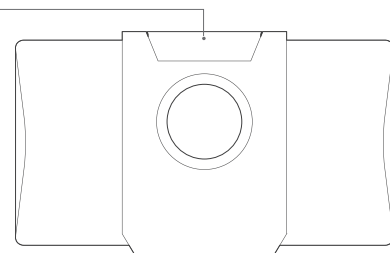
### Control Panel Button



Press: Start/Pause/Self-cleaning Button  
Press and hold the button for 5 seconds:to add water to or drain the water out of Cleaning Sink

## Dust Bag

### Dust Bag Handle

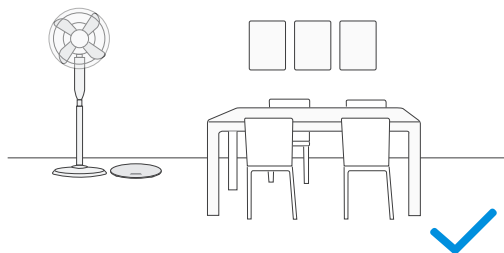


## Sensors

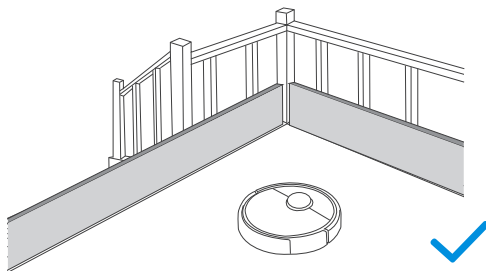
Name	Functional Description
TrueMapping Distance Sensor	With Laser Ranging-measuring the distance between DEEBOT and surroundings through the time difference of reflection, it can map according to the objects around while DEEBOT is moving. Detection of 10m
TrueDetect 3D Sensor	The TrueDetect 3D structured light sensor scans the object with a line laser and collect images with a monocular camera, and generates the three-dimensional coordinates of the object through image algorithms to identify the size of the object. The detection distance is 0.35m
Microphone	Vibrating the diaphragm through air by human voice, it can realize Voice Recording and ask DEEBOT to complete the assigned work by Voice Control. Effective wake of 8m
Anti-drop Sensor	With Infrared Ranging-detecting the distance between the bottom of DEEBOT and ground by Infrared Sensor at the bottom, DEEBOT will not move forward when there are stairs in front or the identified distance exceeds the preset one, realizing the Anti-drop. The trigger distance is 60mm
Carpet Detection Sensor	The difference in energy of the ultrasonic echo signal on different surfaces is used to identify the floor material and help DEEBOT to adjust the cleaning strategy automatically. Drive frequency 290kHz

## Notes Before Cleaning

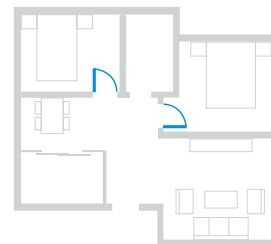
Tidy up the area to be cleaned by putting furniture, such as chairs, in their proper place.



It may be necessary to place a physical barrier at the edge of a drop to stop the unit from falling over the edge.



During the first use, make sure each room door is open to help DEEBOT fully explore your house.



Put away objects including cables, cloths and slippers, etc. on the floor to improve the cleaning efficiency.



Before using the product on a rug with tasseled edges, please fold the rug edges under.



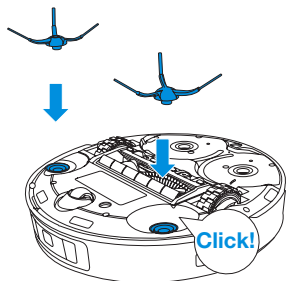
Clean the AI camera and TrueMapping Distance Sensor with a clean cloth, and avoid using any detergent or cleaning spray.

## Quick Start

Before using DEEBOT, please remove all protective films or protective strips on DEEBOT and OMNI Station.

### Install the Dual Side Brushes

Make sure the colors of Dual Side Brushes are consistent with those of mounting slots.



## ECOVACS HOME App

To enjoy all available features, it is recommended to control your DEEBOT via the ECOVACS HOME app.

Before you start, make sure that:

- Your mobile phone is connected to a Wi-Fi network.
- The 2.4GHz or 2.4/5 GHz band wireless signal is enabled on your router.
- The Wi-Fi indicator light on DEEBOT is slowly flashing.



### Wi-Fi Indicator Light

	Slowly flashing	Disconnected to Wi-Fi or waiting for Wi-Fi connection
	Rapidly flashing	Connecting to Wi-Fi
	Solid	Connected to Wi-Fi

## Wi-Fi Connection

Before Wi-Fi setup, make sure DEEBOT, mobile phone, and Wi-Fi network meet the following requirements.

### DEEBOT and Mobile Phone Requirements

- DEEBOT is fully charged and the power switch of DEEBOT is turned on.
- Wi-Fi status light slowly flashes.
- Turn off mobile phone's cellular data (you can turn it back on after setup).

### Wi-Fi Network Requirements

- You are using a 2.4GHz or 2.4/5 GHz mixed network.
- Your router supports 802.11b/g/n and IPv4 protocol.
- Do not use a VPN (Virtual Private Network) or Proxy Server.
- Do not use a hidden network.
- WPA and WPA2 using TKIP, PSK, AES/CCMP encryption.
- WEP EAP (Enterprise Authentication Protocol) is not supported.
- Use Wi-Fi channels 1-11 in North America and channels 1-13 outside North America (refer to local regulatory agency).
- If you are using a network extender/repeater, the network name (SSID) and password are the same as your primary network.

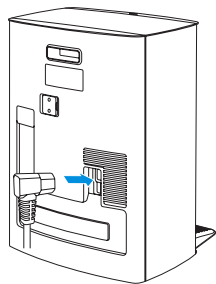
After Wi-Fi connection, DEEBOT will enter into Networked Standby mode if it has no signal input within 10 minutes.

Please be aware that the realization of intelligent functions such as remote startup, voice interaction, 2D/3D map display and control settings, and personalized cleaning (depending on different products) requires users to download and use ECOVACS HOME App, which is constantly updated. You need to agree to our Privacy Policy and User Agreement before we can process some of your basic and necessary information and enable you to operate the product. If you do not agree with our Privacy Policy and User Agreement, some of the aforementioned intelligent functions cannot be realized through ECOVACS HOME App, but you can still use the basic functions of this product for manual operation.



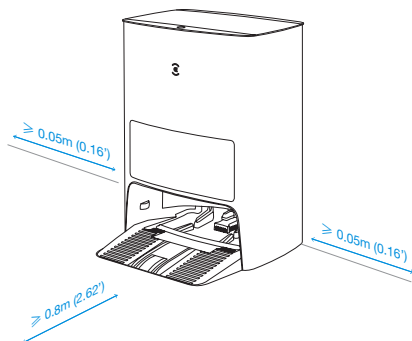
# Charging DEEBOT

## 1 Assemble OMNI Station



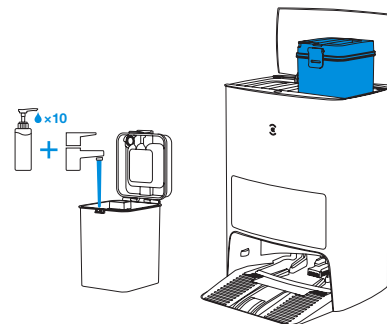
## 2 OMNI Station Placement

Keep the area around the Station clear of objects and reflective object surfaces.



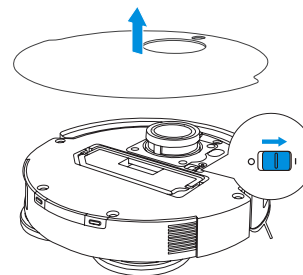
\* If there are reflective objects such as mirrors and reflective skirting lines near the Station, the bottom 14cm of that should be covered.  
Do not place the Station under direct sunlight.  
It is recommended to place the Station on the hard floor to experience complete functions of the robot.

## 3 Add Water to Clean Water Tank



**Note:** It is recommended to use ECOVACS DEEBOT Cleaning Solution (sold separately). Using other cleaning solution may cause DEEBOT slipping, water tank block and other problems.

## 4 Power ON



**Note: I = ON, O = OFF.**  
DEEBOT cannot be charged when being powered OFF.

# Operating DEEBOT

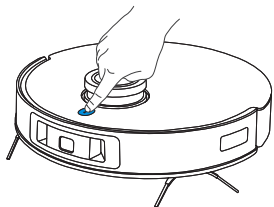
When creating a map for the first time, please follow DEEBOT to help eliminate some minor issues.

For example, DEEBOT may get stuck under the furniture. Please refer to the following solutions:

1. Raise the furniture if possible; 2. Cover the bottom of the furniture; 3. Set up Virtual Boundary via the App.

## 1 Start

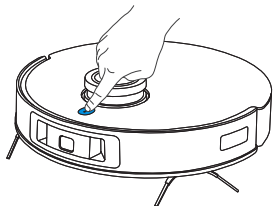
Tap  on DEEBOT or  on the OMNI Station to start



**Note:** For the first-time cleaning, please ensure that DEEBOT is fully charged.

## 2 Pause/Wake Up

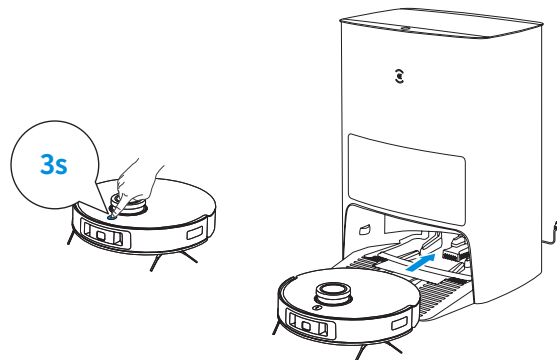
Tap  on DEEBOT or  on the OMNI Station to pause.



**Note:** The indicator light will go out after the robot is paused for a few minutes. Press the AUTO Mode Button on DEEBOT to wake up the robot.

## 3 Back to Station

Tap  for 3 seconds to recall DEEBOT to the OMNI Station.

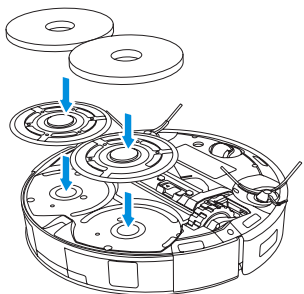


**Note:** When DEEBOT is not working, it is recommended to keep it switched ON and charging.

## Mopping

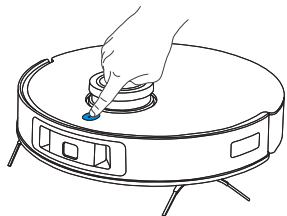
### 1 Attach the Mopping Pads and Mopping Pad Plates.

You would hear a “click” when the Mopping Pad Plates is properly installed.



### 2 Mop

Tap  on DEEBOT or  on the OMNI Station to start mopping.



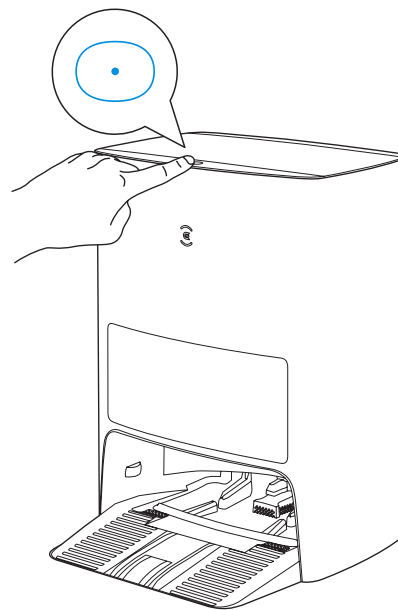
#### Note:

1. To prolong the service life of the reservoir, do not frequently remove washable mopping pads.
2. Do not use a rag or any other object to scratch the Mopping Pad Plates.
3. When the ECOVACS HOME App prompts that the mops need to be replaced, please replace them in time.

Explore more accessories at ECOVACS HOME App or at <https://www.ecovacs.com/global>.

## OMNI Station

Press the  button to Start/Pause/Continue DEEBOT Cleaning



# Regular Maintenance

To keep DEEBOT running at peak performance, perform maintenance tasks and replace parts with the following frequencies:

Robot Part	Maintenance Frequency	Replacement Frequency
Washable Mopping Pad	/	Every 1-2 months
Dust Bag	/	Replace when voice prompts
Dual Side Brushes	Once every 2 weeks	Every 3-6 months
Floating Main Brush	Once per week	Every 6-12 months
Sponge Filter/High Efficiency Filter	Once per week	Every 3-6 months
TrueDetect 3D Sensor TrueMapping Distance Sensor Universal Wheel Anti-Drop Sensors Bumper Charging Contacts OMNI Station Pins	Once per week	/
Cleaning Sink	Once every 2 weeks	/
Clean Water Tank	Once every 3 months	/
Dirty Water Tank	After each mopping	/
Dust Collection Cabin	Once per month	/
OMNI Station	Once per month	/
Filter	Once per month	/

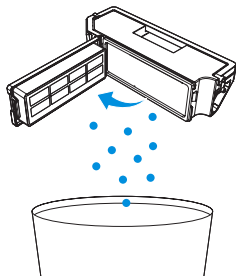
**Before performing cleaning and maintenance tasks on DEEBOT, turn the robot OFF and unplug the OMNI Station.**

**A multi-function Cleaning Tool is provided for easy maintenance. Handle with care, this cleaning tool has sharp edges.**

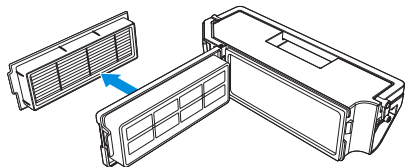
**Note:** ECOVACS manufactures various replacement parts and fittings. Please contact Customer Service for more information on replacement parts.

## Maintain Dust Bin and Filters

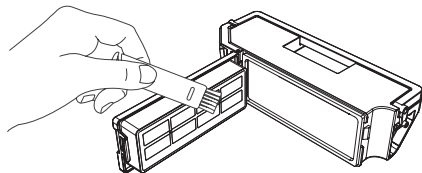
1



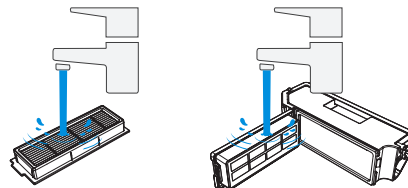
2



3



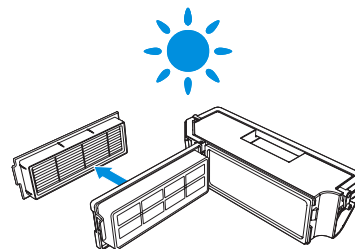
4



### Note:

1. Please rinse the filter with water as shown above.
2. Do not use finger or brush to clean the High Efficiency Filter.

5

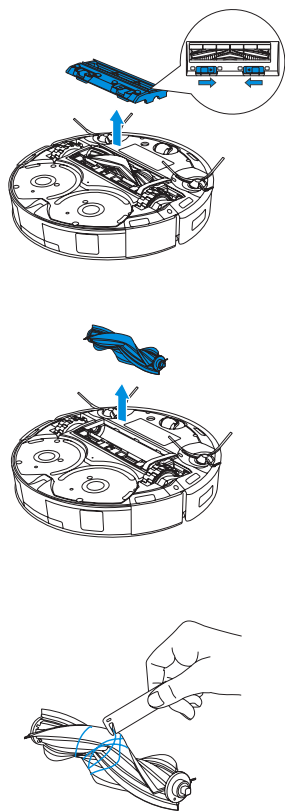


### Note:

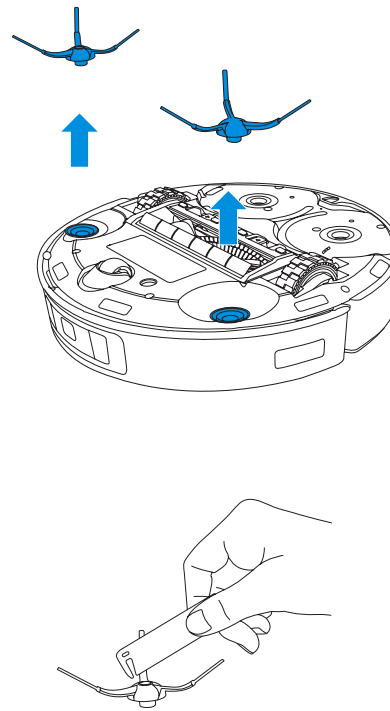
Completely dry the filter before use.  
Explore more accessories at ECOVACS HOME App or at <https://www.ecovacs.com/global>.

# Maintain Floating Main Brush and Dual Side Brushes

## Floating Main Brush

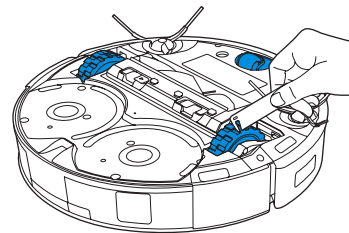
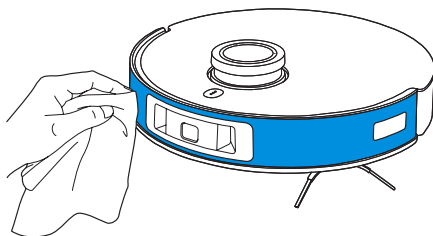
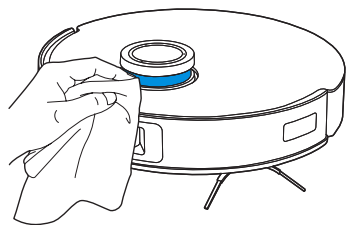
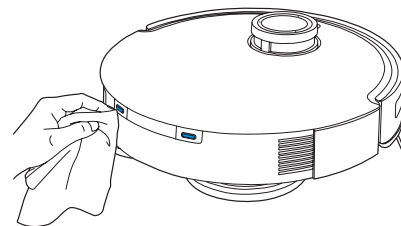
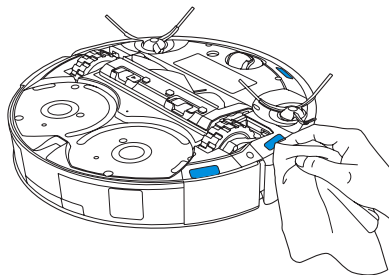
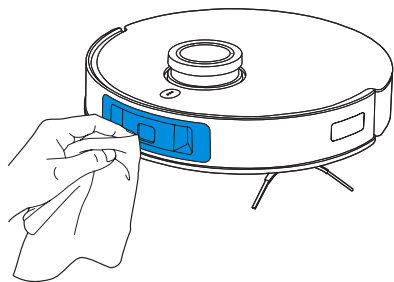


## Dual Side Brushes



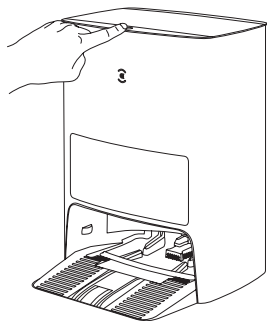
## Maintain Other Components

**Note:** Wipe the components with a clean, dry cloth. Avoid using cleaning sprays or detergents.

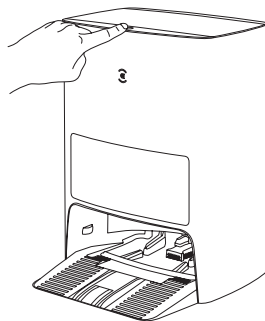


## Maintain OMNI Station

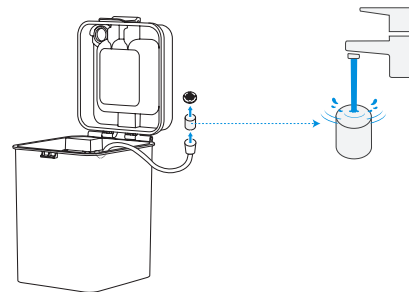
- 1 Press and hold the  button for 5 seconds to add water to Cleaning Sink



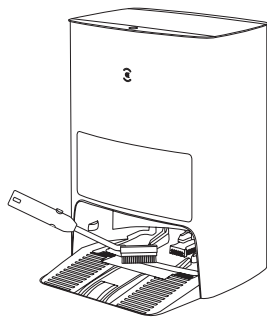
- 3 Press and hold the  button for 5 seconds to drain the water out of Cleaning Sink



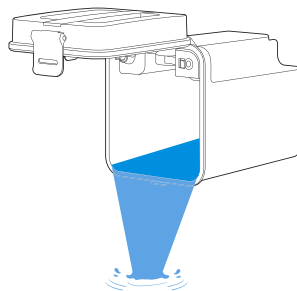
- 5 Clean the Clean Water Tank Filter



- 2 Clean Cleaning Sink



- 4 Empty Dirty Water Tank

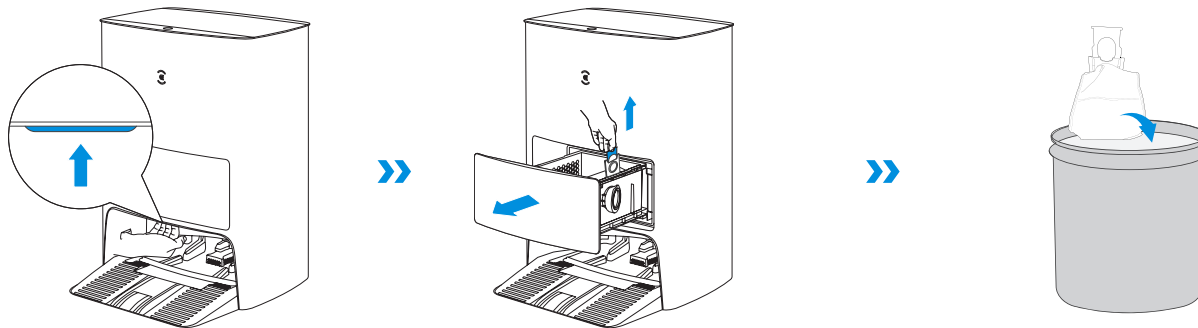




## Maintain Dust Bag

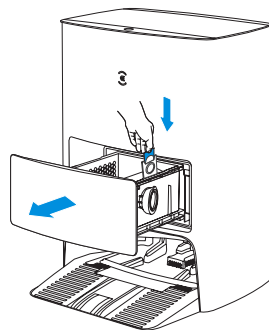
Before performing cleaning and maintenance tasks on DEEBOT, turn the robot OFF and unplug OMNI Station.

### 1 Discard the Dust Bag

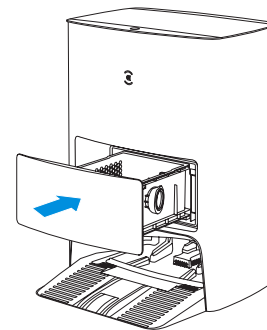


\* Hold the Handle to lift out the Dust Bag, which can effectively prevent dust leakage.

### 2 Clean the Dust Collection Cabin with a dry cloth and put a new Dust Bag in

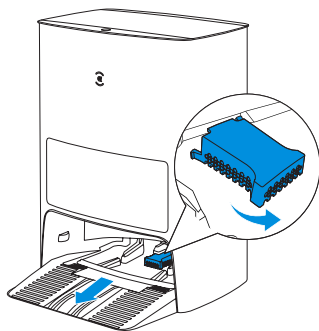


### 3 Close the Dust Collection Cabin

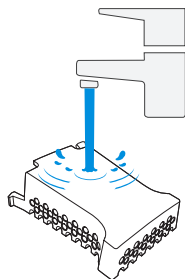


## Maintain Filter

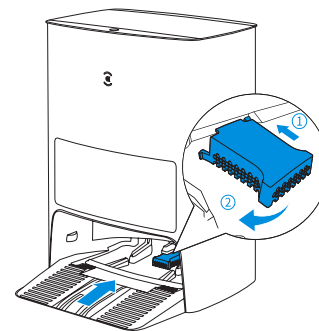
- 1 Take the Filter out**  
Press the filter and turn it sideways to release one hook, and then take the filter out.



- 2 Wash the Filter**  
Wash the filter with clean water.

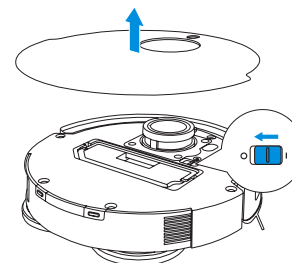


- 3 Install the Filter**  
Place the filter on the bottom plate, slide one hook into the slot, and then push the other hook into the slot until you hear a "click".



## Storage

If DEEBOT will not be used for a while, fully charge DEEBOT and power OFF before storage. Charge DEEBOT every 1.5 month to prevent battery drain.



**Note:** When DEEBOT is not cleaning, it is recommended to keep DEEBOT powered ON and charging.

## Troubleshooting



No.	Malfunction	Possible Causes	Solutions
1	DEEBOT is not able to connect to ECOVACS HOME App.	Incorrect home Wi-Fi username or password entered.	Enter the correct home Wi-Fi username and password.
		DEEBOT is not within range of your home Wi-Fi signal.	Make sure DEEBOT is within range of your home Wi-Fi signal.
		DEEBOT is not in the configuration state.	Make sure DEEBOT is connected to the power supply and turned on. Open the cover, and press RESET Button. DEEBOT will enter the configuration state when you hear a voice prompt.
		Incorrect App installed.	Please download and install ECOVACS HOME App.
		Not using a 2.4GHz or 2.4/5 GHz mixed network.	DEEBOT does not support 5G network. Please use a 2.4GHz or 2.4/5 GHz mixed network.
2	The map is lost.	The map might be lost if you move DEEBOT when cleaning.	Move DEEBOT to the front of the Station to retrieve the map. Find the restored map in the Map Management and tap "Use This Map" to retrieve it. If this problem persists after trying the above solutions, please restart mapping.
3	Unable to create home map on App.	DEEBOT does not start cleaning from the Station.	DEEBOT must start cleaning from the Station.
		Move DEEBOT when cleaning might cause the mop lost.	During cleaning, do not move DEEBOT as far as possible.
		Auto cleaning is not complete.	Make sure DEEBOT automatically return to the Station after cleaning.
4	DEEBOT Dual Side Brushes drop out of place during use.	The Dual Side Brushes are not properly installed.	Make sure the Dual Side Brushes click into place when installing.

No.	Malfunction	Possible Causes	Solutions
5	No signal found. Unable to return to the Station.	The Station is incorrectly placed.	Please place the Station correctly according to the instructions in the <a href="#">[Charging DEEBOT]</a> section.
		The Station is out of power or manually moved.	Check whether the Station is connected to power supply. Do not manually move the Station.
		DEEBOT does not start cleaning from the Station.	It is recommended that DEEBOT start cleaning from the Station.
		The charging route is blocked. For example, the door of the room with the Station is closed.	Keep the charging route clear.
6	DEEBOT returns to the Station before it has finished cleaning.	The room is so large that DEEBOT needs to return to recharge.	Please enable Continuous Cleaning. For more details, please follow the App instruction.
		DEEBOT is unable to reach certain areas blocked by furniture or barriers.	Tidy up the area to be cleaned by putting furniture and small objects in their proper place.
7	DEEBOT is unable to charge.	DEEBOT is not switched ON.	Switch ON DEEBOT.
		DEEBOT's Charging Contacts are not connected to the Station Pins.	Make sure that the robot's Charging Contacts have connected to the Station Pins and the AUTO Mode Button flashes. Check whether DEEBOT'S Charging Contacts and the Station are dirty. Please clean these parts according to the instructions in the <a href="#">[Maintenance]</a> section.
		The Station is not connected to the power supply.	Make sure the Station is connected to the power.
		The battery will be overcharged if DEEBOT is not used for a long time.	It is recommended to regularly use DEEBOT. If the battery cannot be charged because it has not been used for a long time, please contact Customer Care for help.
8	Running is very loud during cleaning.	Dual Side Brushes and Floating Main Brush are entangled. Dust bin and filter are blocked.	It is recommended to clean the Dual Side Brushes, Floating Main Brush, dust bin, filter, etc. regularly.
		DEEBOT is in Max Mode.	Switch to Standard Mode.

No.	Malfunction	Possible Causes	Solutions
9	DEEBOT gets stuck while working and stops.	DEEBOT is tangled with something on the floor (electrical wires, curtains, carpet fringing, etc.).	DEEBOT will try various ways to free itself. If it is unsuccessful, manually remove the obstacles and restart.
		DEEBOT might be stuck under furniture with an entrance of similar height.	Please set a physical barrier, or set a Virtual Boundary via the ECOVACS HOME App.
10	During cleaning, DEEBOT appears in the route disorder, running bias, repeated cleaning, small area leakage and so on. (If there is a large area that has not been swept temporarily, DEEBOT will make up the leakage independently. )	Objects such as wires and slippers placed on the ground affect the normal operation of DEEBOT.	Please tidy up the scattered wires, slippers and other objects on the ground before cleaning. And reduce the scattered objects on the ground as far as possible. If there is any area leakage, DEEBOT will correct the leakage by itself, please do not interfere (such as moving DEEBOT or blocking the route).
		It may be that the Driving Wheels slips on the ground when DEEBOT climbs steps, thresholds and door bars, thus affecting the its judgment of the whole house environment.	It is recommended to close the door of this area and clean the area separately. After cleaning, DEEBOT will return to the starting location. Please rest assured to use.
		Work on freshly waxed and polished floors or smooth tiles, resulting in less friction between the Driving Wheels and the floor.	Please wait for wax to dry before cleaning.
		Due to different home environments, some areas cannot be cleaned.	Clean the home environment to ensure that DEEBOT can enter for cleaning.
		The TrueMapping Distance Sensor is dirty or blocked by foreign matters.	Wipe the TrueMapping Distance Sensor with a clean soft cloth or remove foreign matters.

No.	Malfunction	Possible Causes	Solutions
11	After returning to the Station, DEEBOT does not empty the Dust Bin.	Dust Collection Cabin is not closed.	Please close the Dust Collection Cabin .
		Dust Bag is not installed in the Station.	Install the Dust Bag, and close the Dust Collection Cabin .
		Manually moving DEEBOT back to the Station might not trigger Auto-Empty function.	It is recommended to let DEEBOT return to the Station on its own. Please do not manually move it.
		In Do Not Disturb mode, DEEBOT will not empty the dust after returning back to the Station.	Cancel Do Not Disturb mode in ECOVACS HOME App or manually start dust empty.
		The OMNI Station prompts the Dust Bag is full.	Replace the Dust Bag according to the [ <a href="#">Maintenance</a> ] section and close the Dust Collection Cabin. If the Dust Bag is not full when prompted by ECOVACS HOME App, you can put it back again.
		If the above possible causes have been ruled out, components of the Station may be abnormal.	Please contact Customer Care for help.
12	Fail to empty the Dust Bin.	The OMNI Station prompts the Dust Bag is full.	Replace the Dust Bag according to the [ <a href="#">Maintenance</a> ] section and close the Dust Collection Cabin. If the Dust Bag is not full when prompted by App, you can put it back again.
		The outlet of Dust Bin is blocked by foreign objects.	Remove the Dust Bin and clean the foreign objects on the outlet.

No.	Malfunction	Possible Causes	Solutions
13	The inner side of Dust Collection Cabin is dirty.	Fine particles are absorbed in the inner side of Dust Collection Cabin through the Dust Bag.	Clean the inner side of Dust Collection Cabin.
		The Dust Bag is broken.	Check the Dust Bag. Replace it.
14	Ash leakage occurs during working.	The outlet of Dust Bin is blocked by foreign objects.	Remove the Dust Bin and clean the foreign objects on the outlet.
15	Mopping Pad Plate cannot rotate.	The Mopping Pad Plate is blocked by foreign objects.	Clean the foreign objects.
16	DEEBOT does not respond to the Station instruction.	DEEBOT is too far away from the Station.	If it is beyond the available distance, the ECOVACS HOME App can also be used to operate DEEBOT.
		DEEBOT and the Station are not paired.	Unplug the Station and wait for 10 seconds to plug again. Power off the robot and then turn it back on. Manually push the robot up to the Station, and ensure that the charging pins are correctly connected. Then, DEEBOT will start charging, and voice prompts pairing successful.
17	Fail to enable Child Lock.	Communication interruption between the Station and DEEBOT (For example: long distance or many partition walls)	Move DEEBOT near the Station to ensure smooth communication, and then enable Child Lock.
18	Driving wheels are blocked.	Driving wheels are blocked by foreign objects.	Please rotate and press the driving wheels to check whether there is any foreign object wrapped or stuck. If there is any foreign object, please clean it in time. If this problem persists, please contact Customer Care for help.

No.	Malfunction	Possible Causes	Solutions
19	When the water in the Cleaning Sink is full and cannot be drained out, the voice reports that the Cleaning Sink is full.	The Dirty Water Tank is not properly installed.	Tap down on the Dirty Water Tank to ensure it is properly installed.
		The sealing plugs in the Dirty Water Tank is not installed properly.	Make sure to check that the sealing plugs are properly installed.
		The Station cannot drain water normally.	Press and hold  for 5 seconds. After the cleaning tank has been automatically filled with water, press and hold the OMNI Station for 5 seconds. If the problem occurs during the mopping pads cleaning process end task by APP/Vocies, and then press and hold twice  ( for 5 seconds ) to see whether the Station can properly draw the water.If the water is successfully drawn, wipe dry the Water Overflow Sensor of the Cleaning Sink. If the Station fails to draw the water, check between the Dirty Water Tank and the Station for foreign object and clean it.
		The suction port of the Cleaning Sink is blocked by foreign object.	Ensure that there is no foreign object in the suction port of the Cleaning Sink .
		The voice prompt still exists after trying the above solutions.	Unplug the Station and plug it again. If this problem persists, please contact Customer Care for help.
20	The Mopping Pad can't be lifted automatically.	The Mopping Pad is entangled or stuck by foreign objects.	Please remove foreign objects.
		The Mopping Pad falls off.	Reinstall the Mopping Pad and you would hear a “click” when the Mopping Pad Plates is properly installed.



## Technical Specifications

<b>Model</b>	<b>DLX23</b>
Rated Input	20V === 2A
<b>Docking Station(OMNI Station)</b>	<b>CH2232</b>
Rated Input	110-120V ~ 50-60Hz 6.9A(Emptying) 0.9A(Charging) 11.4A(Hot water washing mop)
Rated Output	20V === 2A

**Note:** Technical and design specifications may be changed for continuous product improvement.  
Explore more accessories at <https://www.ecovacs.com/global>.

## Instructions importantes de sécurité

### INSTRUCTIONS IMPORTANTES DE SÉCURITÉ

#### LIRE TOUTES LES INSTRUCTIONS AVANT L'UTILISATION DE L'APPAREIL.

Lors de l'utilisation d'un appareil électrique, les précautions de base suivantes doivent être suivies.

**AVERTISSEMENT :** Lire tous les avertissements de sécurité et toutes les instructions. Ne pas suivre les avertissements et les instructions peut entraîner une décharge électrique, un incendie ou des blessures graves.

1. L'appareil ne doit pas être utilisé comme un jouet. Une attention particulière est nécessaire lorsqu'il est utilisé par des enfants ou près d'eux.
2. Rangez la zone à nettoyer. Retirez les cordons d'alimentation et les petits objets situés sur le plancher qui pourraient s'enchevêtrer dans l'appareil. Glissez les franges sous le tapis, dégagez le plancher et

- relevez les bouts des rideaux et des nappes.
3. En cas de présence d'un point de chute dans la zone de nettoyage à cause d'une marche ou d'un escalier, vous devriez utiliser l'appareil afin de vous assurer qu'il est en mesure de détecter la marche sans tomber. Il pourrait être nécessaire de placer une barrière physique au bord du point de chute pour empêcher l'unité de tomber. Assurez-vous que la barrière ne représente pas un risque de trébuchement.
4. Utilisez l'appareil seulement de la manière décrite dans ce manuel. Utilisez seulement les accessoires recommandés ou vendus par le fabricant.
5. Ne manipulez pas la fiche électrique ou l'appareil avec des mains humides.
6. Les batteries non rechargeables sont interdites.
7. N'utilisez pas l'appareil si le bac à poussière ou les filtres ne sont pas en place.
8. N'utilisez pas l'aspirateur dans une pièce avec des chandelles allumées ou des objets fragiles sur le plancher à nettoyer.
9. N'utilisez pas l'appareil et ne l'entreposez